

# For Sale



## Gevers Deynootplein 216

2586 CT Den Haag

Walk-up flat, Apartment 120m<sup>2</sup>

Vraagprijs € 679.500 k.k.

# Features

Price	€ 679.500 k.k.
Status	Sold
Acceptance	In consultation
Apartment type	Walk-up flat, Apartment
Bottom floor	6
Build type	Existing
Build year	1981
Maintenance inside	Excellent
Maintenance outside	Good
Particulars	Special needs accessible, Elderly accessible
Living surface	120m <sup>2</sup>
Volume	370m <sup>3</sup>
Rooms	3
Bedrooms	2
Bathrooms	1
Floors	1
Facilities	Lift, Mechanical ventilation, Cable tv
Energy label	A
Isolation	Insulated glazing
Hot water	Central heating
Heating	Central heating
Furnace	Remeha /Ace 35c (2025, Combined furnace, Owned)
Location	Clear view, Sea view
Balcony	Yes
Shed	Lock-up
Garage type	Parking spot

# Description

EXCLUSIVE living with panoramic SEA VIEWS in Scheveningen!

This luxurious and modern corner apartment offers an unparalleled living experience with breathtaking views of the sea and the beach. Located in vibrant Scheveningen, you'll enjoy a harmonious combination of elegance, comfort, and design.

## HIGHLIGHTS

- \* Sea views from the living room and both bedrooms
- \* Exclusive finishes with modern design
- \* Private parking space in the secure residents' garage
- \* Energy label A
- \* Fantastic location, the perfect combination of city and beach

The location is ideal: you can do your daily shopping at Palace Promenade or the charming Belgisch Park with its varied selection of (fresh) specialty shops. The city center of The Hague is within 15 minutes, public transport is practically on the doorstep, and there are quick access routes to the A4, A12, and A13 highways towards Amsterdam, Utrecht, and Rotterdam.

LAYOUT (see floor plans for dimensions):

Enclosed entrance with video intercom and mailboxes.

Elevator(s) to the 6th floor, spacious hallway with entrance to two apartments, meter cupboard, and garbage chute.

Apartment entrance: spacious reception hall with coat closet, modern toilet with hand basin, built-in cupboard housing the central heating boiler (2025), internal storage, and cupboard housing the washing machine and dryer.

Delightful, spacious, and bright living room thanks to its corner location. On the seaward side, there is a door to the spacious balcony (afternoon and evening sun) and on the landward side, a smaller, wonderfully sunny balcony (south) with lovely views of old Scheveningen and The Hague.

A modern, luxurious, and fully equipped open-plan kitchen with a large work island, a wall of cabinets, and premium built-in appliances, including an induction cooktop, recirculating extractor hood, Quooker tap, dishwasher, refrigerator/freezer, oven, wine cooler, and built-in coffee machine.

The two bedrooms both offer unobstructed sea views; one bedroom/study and the other a charming master bedroom with a wall of wardrobes.

Luxurious bathroom with underfloor heating, a freestanding bathtub, a large walk-in shower, and a double vanity.

# Description

Under the complex, there is a storage room and shared bicycle storage. A private parking space is located in the secure residents' parking garage.

This exclusive apartment combines luxury, design, and sea views – a home where every day feels like a vacation.

## DETAILS:

- Built in 1981
- In 2025, the flues in the complex were replaced and new high-efficiency central heating boilers were installed.
- The apartment was completely renovated internally in 2018/2019.
- Fully equipped with wooden window frames and double glazing.
- Active, professionally managed homeowners' association (VVE), contribution €426,86, maintenance plan, reserve fund.
- A caretaker is present in the complex during weekdays.
- Permanent municipal leasehold, ground rent €713.34 per year until 2030. Ground rent review effective January 1, 2031. The annual CBS index will be applied from January 1, 2032.
- Transfer of ownership by agreement, can be done quickly.
- Choice of notary reserved for buyer within the Haaglanden area.
- Given the year of construction of the property, an age and materials clause will be included in the NVM purchase agreement.

## NEN2580 Explanatory Clause

The Measurement Instructions are based on NEN2580. The Measurement Instructions are intended to apply a more uniform measuring method to provide an indication of the usable area. The Measurement Instructions do not completely eliminate differences in measurement results, for example, due to differences in interpretation, rounding, or limitations in the measurement process.

Belvedere Makelaars represents the interests of the selling party in this matter. As a buyer, you have your own obligation to investigate; bring your own NVM purchasing agent. Your NVM purchasing agent will represent your interests and save you time, money, and worry. You can find the addresses of fellow NVM purchasing agents in The Hague region on Funda.

We have compiled this information with due care. However, we accept no liability for any incompleteness, inaccuracy, or otherwise, or the consequences thereof.

The information is for indicative purposes only. The buyer is given the opportunity to conduct further investigations themselves if necessary.

# Photos



# Photos



# Photos



# Photos

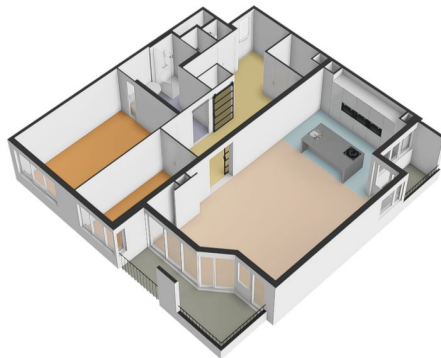
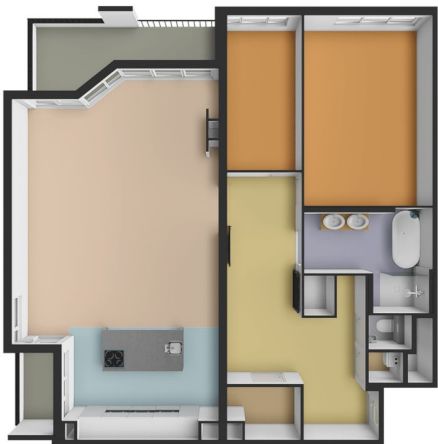
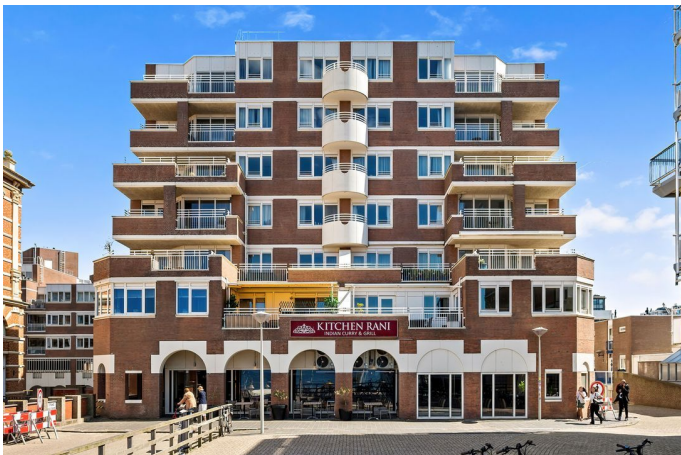


# Photos

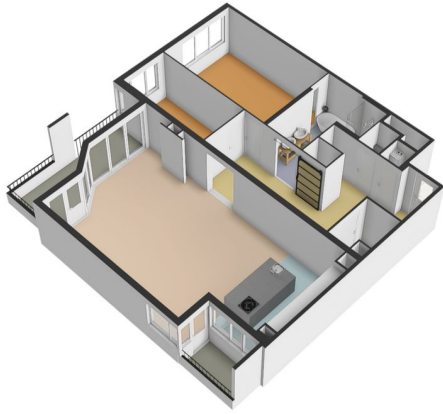




# Photos

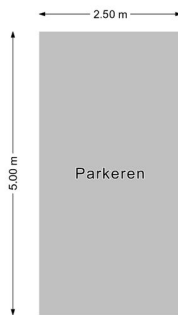


# Photos



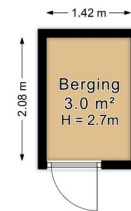
Gevers Deynootplein 216, 's-Gravenhage

Parkeren



Gevers Deynootplein 216, 's-Gravenhage

Berging



*De plattegronden zijn geproduceerd voor promotionele doeleinden en ter indicatie.  
Aan de plattegronden kunnen geen rechten worden ontleend.  
© www.roundsense.com*

*De plattegronden zijn geproduceerd voor promotionele doeleinden en ter indicatie.  
Aan de plattegronden kunnen geen rechten worden ontleend.  
© www.roundsense.com*